

**Jeep**<sup>®</sup>



## **2007 JEEP<sup>®</sup> COMMANDER**

Our Biggest Idea Yet

For more information, please visit [jeep.com/commander](http://jeep.com/commander)  
For more information on Trail Rated, please visit [jeep.com/trailrated](http://jeep.com/trailrated)

Jeep is a registered trademark of DaimlerChrysler Corporation  
©1995-2006 DaimlerChrysler. All Rights Reserved. For important information, go to [jeep.com/privacy](http://jeep.com/privacy)

Page 1 of 7

# Jeep®

## COMMANDER FEATURES



### POWER

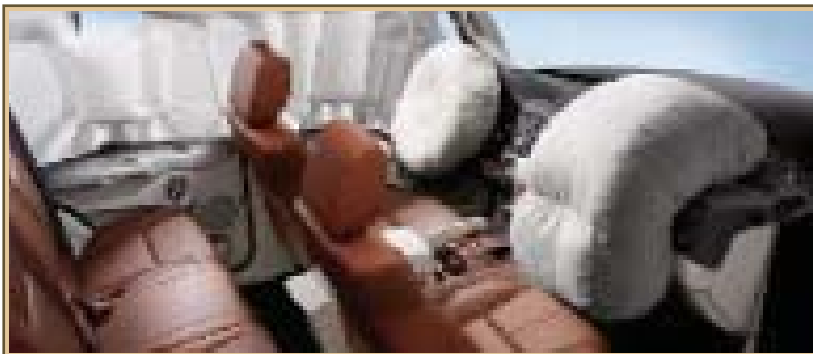
For matchless, authentic Jeep® brand power, take control of Commander Limited's available 5.7L HEMI® V8 engine with multispeed automatic transmission, Electronic Range Select (ERS) and Tow/Haul mode. On the highway, the HEMI engine's 330 horsepower helps you rule the road.

HEMI is a registered trademark of DaimlerChrysler Corporation.



### VERSATILITY

Commander is the ultimate Jeep vehicle for versatility and flexibility; seating for seven passengers, 15 usable seating/cargo configurations, and massive space for your gear (max. 68.5 cu ft). Third-row seating with split-back convenience is standard. The second row splits 40/20/40 and the outboard seatbacks recline. Both passenger rows fold forward to provide a flat load floor for the maximum in utility and packability.



### BUILT-IN SAFETY

Advanced driver and front-passenger multistage air bags and Side Occupant Protection System\* with side-curtain air bags come standard on Commander for peace of mind.

\*Always sit properly in the seat with the seatbelt fastened.



### RUGGED FEATURES

The rear glass window can be opened remotely with a key fob. A rain gutter channels water away from you when opening the rear liftgate. The diamond-plate texture on the step pad provides a rugged, non-skid surface when using the rear bumper to gain access to the roof. Exterior chrome rear assist handles are available on Commander Limited.



### GPS NAVIGATION SYSTEM

The available GPS Navigation System offers a full-screen (5.8-inch) color display with AM/FM stereo and CD player and is great for plotting out your way to even the most remote retreats.

For more information, please visit [jeep.com/commander](http://jeep.com/commander)

Jeep is a registered trademark of DaimlerChrysler Corporation  
©1995-2006 DaimlerChrysler. All Rights Reserved. For important information, go to [jeep.com/privacy](http://jeep.com/privacy)

Page 2 of 7



## COMMANDER CAPABILITIES



### QUADRA-DRIVE II

Quadra-Drive II® can transfer up to 100 percent of available torque to any wheel with traction within a fraction of a second.



### ELECTRONIC STABILITY PROGRAM (ESP)

Commander standard Electronic Stability Program\* (ESP) automatically assists drivers in maintaining control of their vehicles during extreme maneuvers.

\* Always drive carefully, consistent with conditions. Always wear your seat belt and obey traffic laws



### PARKSENSE® REAR PARK ASSIST SYSTEM

The ParkSense® Rear Park Assist System\* uses sound waves to detect nearby obstacles in and near the rear path of the vehicle to help you maneuver in tight spaces at parking speeds. Audio-visual indicators in the overhead display in the rear of the vehicle alert you to the proximity of most larger, stationary objects that might be outside your line of sight.

\* Always check entire surroundings before backing up.



### 5.7 LITER HEMI® V-8

The optional 5.7L Hemi(R) V8 delivers best in class 330 horsepower and 375 lb-ft of torque\* for incredible acceleration. Electronic Throttle Control (ETC) helps to maintain consistent cruising speed, while the Multi-Displacement System (MDS) automatically scales back to four cylinders, when appropriate, to boost fuel economy. MDS also reduces emissions and provides a smooth seamless transition between four and eight cylinders.

\* Based on the Automotive News 2005 lower segmentation. Excludes other DaimlerChrysler vehicles.

HEMI is a registered trademark of DaimlerChrysler Corporation.

For more information, please visit [jeep.com/commander](http://jeep.com/commander)



## COMMANDER COLOR OPTIONS



LEGEND: 1 Sport; 2 Limited; 3 Overland

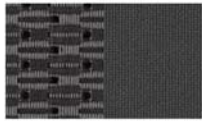
NOTE: Due to occasional printing irregularities, the colors shown may vary slightly from actual hues.

For more information, please visit [jeep.com/commander](http://jeep.com/commander)

Jeep is a registered trademark of DaimlerChrysler Corporation  
©1995-2006 DaimlerChrysler. All Rights Reserved. For important information, go to [jeep.com/privacy](http://jeep.com/privacy)

## COMMANDER COLOR OPTIONS

### SPORT



Telluride Cloth/Albi Cloth  
Medium Slate Gray | Standard



Telluride Cloth/Albi Cloth  
Medium Khaki | Standard



McKinley Leather Trim  
Medium Slate Gray | Available



McKinley Leather Trim  
Medium Khaki | Available



Telluride Cloth/Albi Cloth  
Medium Khaki | Standard

### LIMITED



Yuma Leather Trim  
w/Axis Perforated Inserts  
Light Graystone/Dark Khaki |  
Standard



Yuma Leather Trim  
w/Axis Perforated Inserts  
Light Graystone | Standard



Yuma Leather Trim  
w/Axis Perforated Inserts  
Saddle Brown | Available



Yuma Leather Trim  
w/Axis Perforated Inserts  
Saddle Brown | Available

### OVERLAND



Yuma Leather Trim w/Preferred  
Suede® Microfiber Inserts  
Light Graystone/Dark Khaki |  
Standard



Yuma Leather Trim w/Preferred  
Suede® Microfiber Inserts  
Light Graystone/  
Dark Slate Gray | Standard



Yuma Leather Trim  
w/Preferred Suede® Microfiber  
Inserts Light Graystone/  
Dark Khaki | Standard

### SPORT



17-inch Wrench Cast-Aluminum  
with Machined Face and  
Sparkle Silver Accents | Standard  
Commander Sport  
and Commander Limited



17-inch Hulk Cast-Aluminum  
painted Mineral Gray | Available

### LIMITED



17-inch Chrome-Clad  
Forged Aluminum | Available

### OVERLAND



17-inch Platinum-Clad  
Forged Aluminum | Standard



18-inch Casino Platinum-Clad  
Forged Aluminum | Available  
(late availability)

For more information, please visit [jeep.com/commander](http://jeep.com/commander)



## COMMANDER MODELS

	SPORT		LIMITED	OVERLAND
	S	U	H	L
<b>CAPABILITY</b>				
<b>Engines</b> — 3.7L V6	•	•		
— 4.7L V8	0	0	•	
— 4.7L FFV V8	0	0	•	
— 5.7L HEMI® V8 with MDS			0	•
<b>Four-Wheel-Drive Systems</b> — Quadra-Trac I® full-time single-speed <sup>(1)</sup> (4x4 models only, included with 3.7L V6 engine)	•	•		
— Quadra-Trac II® active 4WD (included with 4.7L V8 engine or Quadra-Trac II 4x4 Group)	P	P	•	
— Quadra-Drive II® active 4WD (included with 5.7L HEMI® V8 engine)		0	0/P	•
<b>Quadra-Trac II 4x4 Group</b> — Includes Quadra-Trac II 4WD, fuel tank, transfer case and front suspension skid plates, and tow hooks (2 front/1 rear) (requires 3.7L V6)	0	0		
<b>Quadra-Drive II 4x4 Group</b> — Includes Quadra-Drive II 4WD, transfer case, front suspension, fuel tank skid plates and tow hooks (2 front/1 rear) (requires V8)		0	0	
<b>Skid Plate Group</b> — Includes fuel tank, transfer case, front suspension skid plates and tow hooks (2 front/1 rear) (requires 4WD)	0	0	0	•
<b>Tires</b> — P245/65R17 Goodyear Fortera HL black sidewall all-terrain	•	•	•	•
— P245/65R17 Goodyear Fortera HL outline-white-letter all-terrain	0	0	0	
— P245/60R18 Goodyear Fortera HL black sidewall all-terrain (late availability)				0
<b>EXTERIOR</b>				
<b>Lighting</b> — Automatic headlamps (ON/OFF) include programmable headlamps-on-with-wipers, parade mode and delay features		•	•	•
— Fog lamps integral with front fascia, water-resistant	0	•	•	•
— SmartBeam™ intelligent high-beam headlamp control system			•	•
<b>Liftgate</b> — Power, opens and closes with remote key fob or interior button		0	0	•
<b>Wiper System</b> — Rain-sensitive automatic wiper system with rain-sensitive features			•	•
<b>INTERIOR</b>				
<b>Air Conditioning/Heat</b> — Manual temperature controls with second-row outlets	•	•		
— Infrared Dual Zone Climate Control with solar sensors and rear-seat outlets			•	•
— Third-row manual temperature controls and outlet	0	0	•	•
<b>Cargo Area</b> — Reversible floor panel with storage tray and 2 cargo tie-down loops in quarter trim, cargo storage bin and storage net in trim panel	•	•	•	•
<b>Jeep® Memory System</b> — Radio station presets, last-station settings, driver's seat position, exterior mirrors and accelerator and brake pedal settings for 2 drivers linked to separate key fobs			•	•
<b>Pedals</b> — Power adjustable (included in Popular Equipment Group)	P	•		
— Power adjustable with memory			•	•
<b>Popular Equipment Group</b> — Includes remote start, roof rack cross rails, heated front seats and power adjustable pedals	0	•	•	•
<b>Rearview Mirror</b> — Auto-dimming		•	•	•
<b>Seats</b> — Second-row 40/20/40 bench with outboard reclining, Fold and Tumble section with head restraints and fold-down center armrest with deployable cup holders	•	•	•	•
— Third-row 50/50 single-action split-folding seatbacks with head restraints	•	•	•	•
— Heated front seats (included in Popular Equipment Group)	P	•	•	•
— Front continuously variable manual lumbar seat adjustment	•	•	•	•
— 8-way power driver's, manual front-passenger seat adjustment	•			

For more information, please visit [jeep.com/commander](http://jeep.com/commander)



## COMMANDER MODELS

	SPORT		LIMITED	OVERLAND
	S	U	H	L
<b>Seats (continued)</b> — 8-way power driver's, 4-way power front-passenger seat adjustment		•		
— 8-way power driver's with memory, 4-way power front-passenger seat adjustment			•	•
<b>Sunroof</b> — Power with CommandView™ Dual Skylights; tinted panels — includes roller sunshades (included in Sun and Sound Package)	P	•	•	•
<b>SAFETY/SECURITY</b>				
<b>Air Bags<sup>(2)</sup></b> — Advanced front multistage, deploy during a severe-force frontal or near-frontal impact	•	•	•	•
— Side Occupant Protection System with side-curtain air bags and rollover detection system provides additional protection to outboard occupants in the event of a vehicle collision or vehicle rollover	•	•	•	•
<b>Child Seat Anchor System (LATCH)</b> — Lower child seat anchors and upper tether anchors help ease the installation of compatible aftermarket seats	•	•	•	•
<b>Electronic Brake System</b> — Antilock brake system (ABS) with Brake Assist	•	•	•	•
— All-speed traction control	•	•	•	•
<b>Electronic Stability Program (ESP)</b> — Includes Brake Assist and Electronic Roll Mitigation	•	•	•	•
<b>ParkSense<sup>(3)</sup></b> — Rear Park Assist System with shut-off switch	•	•	•	•
<b>ParkView™<sup>(3)</sup></b> — Rear Back-Up Camera (requires GPS Navigation System)		0	0	•
<b>Remote Keyless Entry System</b> — Operates door and liftgate locks and liftgate flipper glass release; includes Sentry Key® Engine Immobilizer	•	•	•	•
<b>Restraint System</b> — Height-adjustable, pivoting front seat belts with pretensioning and digressive load-limiting retractors; BeltAlert driver and front-passenger seat belt reminder system, shoulder/lap belts for all seating positions	•	•	•	•
<b>Sentry Key Engine Immobilizer</b>	•	•	•	•
<b>Tire Pressure Monitoring Display System</b> — Features tire valve stem-mounted sensors that monitor and display (in EVIC) individual tire pressures for all four rotating tires and warns if pressure is too low or too high			•	•
<b>Tire Pressure Monitoring Warning System</b> — Features tire valve stem-mounted sensors that monitor pressure and display warning in instrument cluster if pressure is too low or too high	•	•		
<b>Vehicle Security System</b> — Monitors doors, flipper glass and liftgate		•	•	•
<b>SOUND SYSTEMS/ENTERTAINMENT</b>				
<b>Entertainment/Communication</b> — UConnect® voice-activated hands-free communication system		0	0	•
— SIRIUS® Satellite Radio (included with Premium Sound Group)	P	0	•	•
— Rear DVD Video Entertainment System (VES®) with DVD player in center floor console, remote control, 2 wireless headphone jacks and Rear Seat Video™ screen in overhead console		0	0	0
<b>Radios</b> — AM/FM stereo radio with CD player and clock, interface for portable audio devices	•			
— AM/FM/RDS stereo radio with 6-disc CD/MP3 player and clock	P	•	•	
— Full-screen GPS/DVD-based Navigation System with AM/FM/RDS stereo radio, 6-disc CD/MP3 player and clock		0	0	•
<b>Speakers</b> — 6-speaker system	•			
— Boston Acoustics® Premium Sound System with 6 speakers and 276-watt digital amplifier (included with Premium Sound Group)	P	•	•	•

• = Included. P = Available within package noted. 0 = Optional.

<sup>(1)</sup> Quadra-Trac I is not appropriate for conditions or situations where low range is required, such as severe off-road driving. <sup>(2)</sup> Always use seat belts. Children 12 and under should always be in a backseat correctly using an infant or child restraint system, or the seat belt positioned correctly for the child's age and weight. <sup>(3)</sup> Always check entire surroundings before backing up.

For more information, please visit [jeep.com/commander](http://jeep.com/commander)

Jeep is a registered trademark of DaimlerChrysler Corporation  
©1995-2006 DaimlerChrysler. All Rights Reserved. For important information, go to [jeep.com/privacy](http://jeep.com/privacy)

Page 7 of 7